

AEGIS Project Bulletin

Welcome to the first update from the AEGIS Study!

AEGIS is an NIHR-funded research project focused on advancing equity for children and young people seeking asylum or with refugee backgrounds in the UK. Through these bulletins, we'll keep you updated on our progress, share insights, and highlight ways you can get involved.

You're receiving this because **you're part of our mailing list—thank you for being here**. Feel free to forward this update to colleagues or networks who might be interested in our work. There's a sign-up link at the end of this bulletin for anyone who'd like to join.

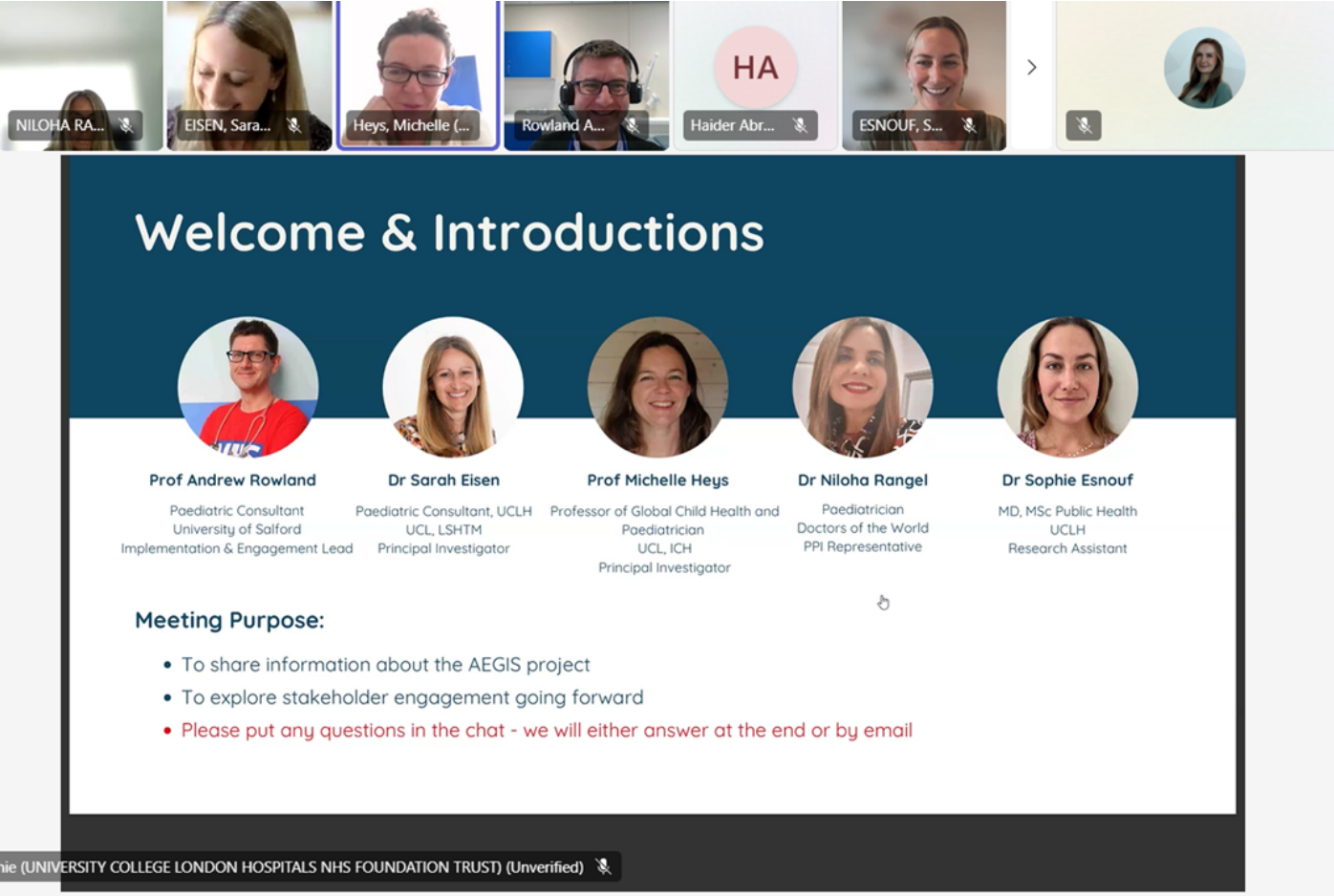
In this first edition, you'll find:

- 1) A recap of our inaugural stakeholder webinar
- 2) Responses to frequently asked questions
- 3) A link to watch the recording
- 4) A link to our national survey mapping initiatives and organisations that support children and young people seeking asylum and refuge (CYPSAR).

Recap of Stakeholder Webinar

Last Tuesday, 8th July, we held our **first Stakeholder Webinar** — and we were thrilled to welcome **over 50 attendees!** Your engagement and thoughtful questions made for a rich and productive session.

As promised, we've put together a summary of the most **frequently asked questions** to keep the conversation going.



Responses to FAQ:

Who are the other marginalised populations you're considering when discussing generalisability?

In addition to unaccompanied asylum-seeking and refugee children and young people (CYP), we're aware that other groups may face similar vulnerabilities and should be considered in the broader scope of generalisability. These include, but are not limited to:

CYP who are looked after or in care; those experiencing housing insecurity or living in temporary accommodation; traveller and Roma communities; individuals facing social and legislative inequalities

Our early findings are helping shape recommendations for what a larger-scale grant could explore more comprehensively.

How were the sites selected for local-level data collection?

For this development phase, we adopted a pragmatic approach due to time and resource constraints. We selected three sites where co-investigators were already embedded. While these are just initial examples, we acknowledge that **pockets of good practice exist across the UK**, and a more systematic national approach is our long-term aim.

We are currently circulating a **survey to map existing initiatives** across the four nations, and we welcome your input. If you're aware of other local data collection efforts, please do share them with us — these can inform future program grant applications.

Is prehospital and ambulance data part of the study?

Not at this stage — but we completely agree that **prehospital and ambulance care is a critical component**. It has been identified as an area outside our current scope, but we are very keen to explore it further.

We're **already setting up conversations** with colleagues working in this space and would love to expand those discussions. **Please do reach out** if you're involved in related work or are interested in collaborating.

Are you using data from all four nations in the E-CHILD database?

Currently, the E-CHILD data we're using includes **England only**. However, we would **very much like to extend this work to include Wales, Scotland, and Northern Ireland**. Expanding to all four nations is part of our future vision, and we're actively exploring how this can be done.

Webinar Recording

If you need access, just send us a request and we'll be happy to grant it.

[Link to Webinar Recording](#)

Mapping Support for CYPSAR



Mapping Support for Refugee & Asylum-Seeking Children

We're gathering information on programmes and organisations working with children and young people seeking asylum or refugees (CYPSAR) in the UK. If your work touches on health, education, social care, youth empowerment, or related areas, we'd love to hear from you.

Share your work by completing this short survey:

[Link to Survey](#)

Want to Stay in Touch?

If we haven't connected before and you'd like to be added to our mailing list and contact database, please fill out the short form below. This will help us keep you in the loop and reach out occasionally if relevant opportunities or collaborations arise.

You can also email us at uclh.aegisproject@nhs.net

[Link to Contact Database](#)



If you'd like to **unsubscribe** please email us on uclh.aegisproject@nhs.net