



The Yorkshire and Humber
Neonatal
Operational Delivery Network

Project to review the use of Expressed Breast Milk (EBM) in Neonatal Units across Yorkshire and the Humber ODN

Dr Claire Blythe
Leadership Fellow

Developing people
for health and
healthcare

www.hee.nhs.uk



Aims

- To gather information about patterns of EBM use
- To compare EBM use to background population data
- To share good practice across the region to improve morbidity and mortality



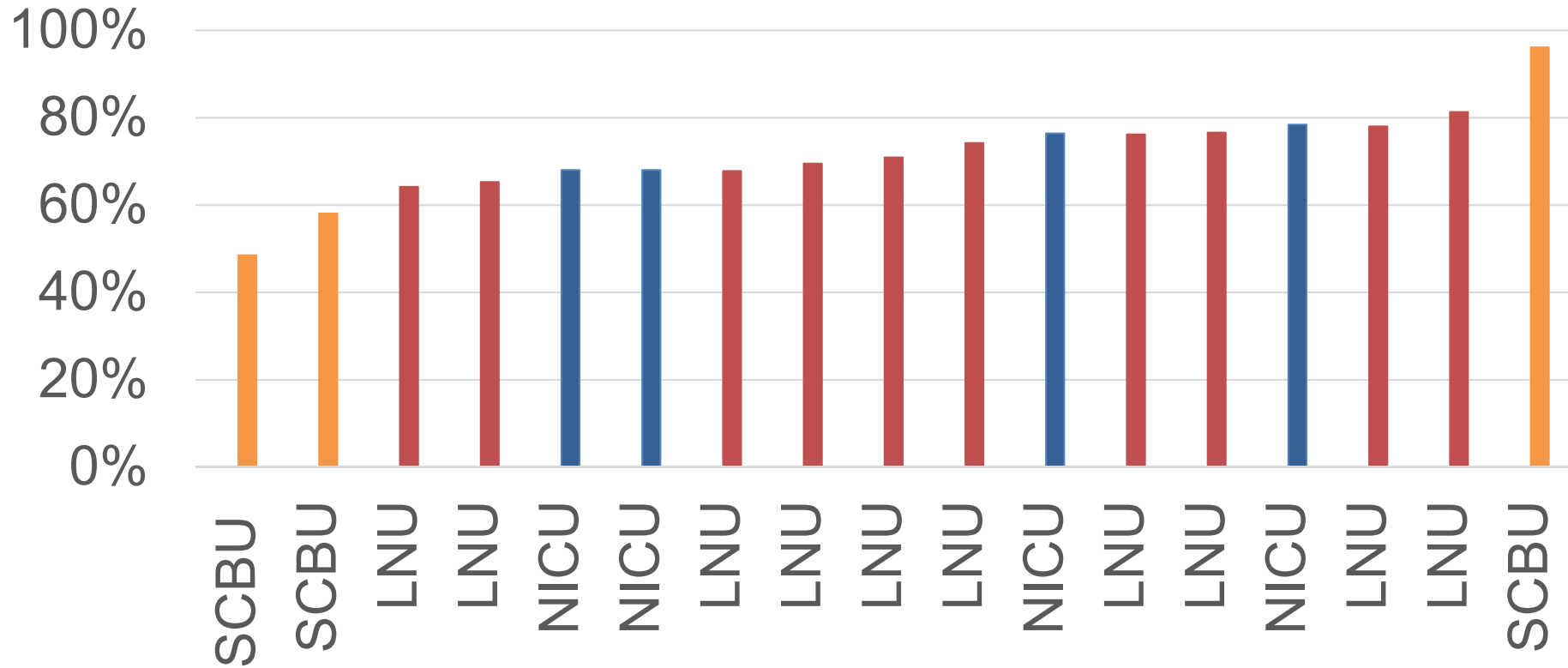
Method

- Retrospective review of Badger data
- March 2017- April 2018
- Cross-section analysis- feeding on day 1,7,14....56 and discharge
- 4 NICUs + TC + <33 weeks
- 10 LNUUs
- 3 SCBUUs



The Yorkshire and Humber
Neonatal
 Operational Delivery Network

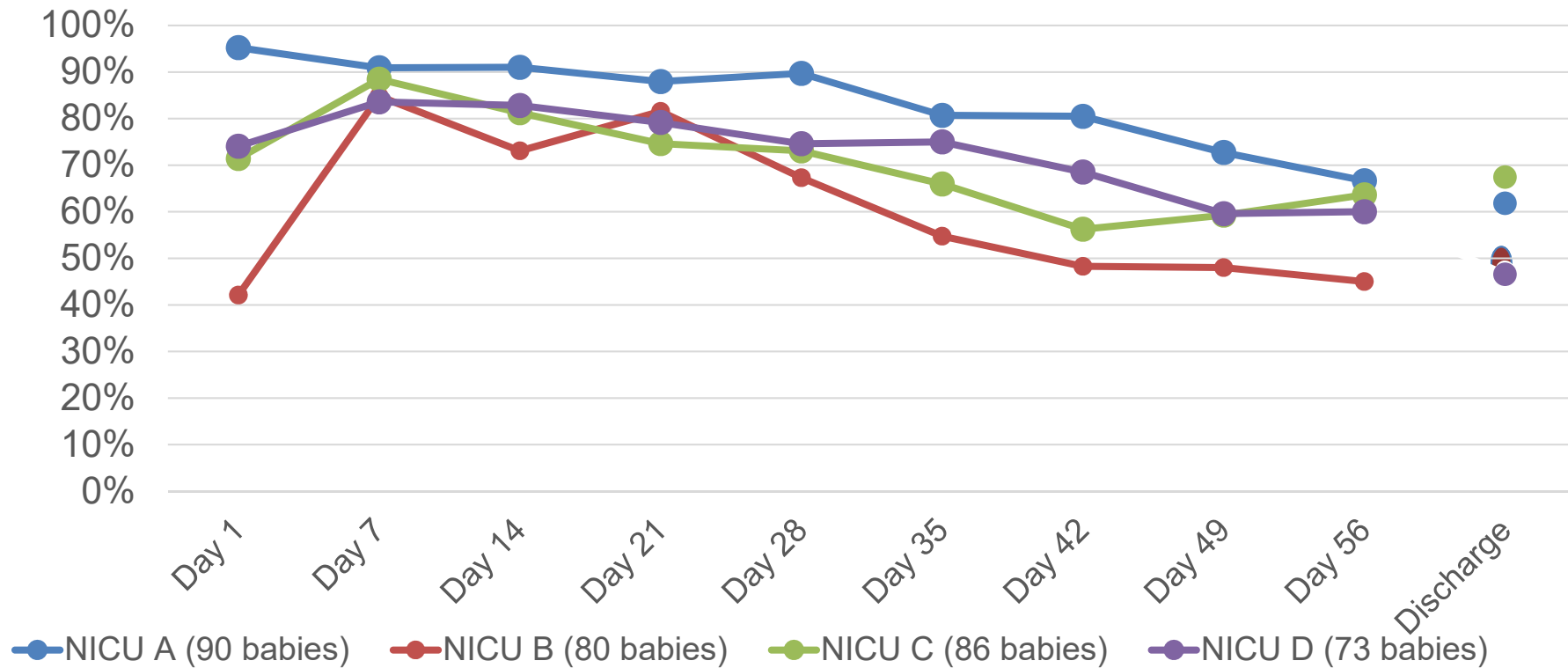
% of infants receiving any mother's milk during admission





The Yorkshire and Humber
Neonatal
Operational Delivery Network

Chart to show cross-sectional analysis of infants on NICU +TC < 33 weeks gestation





Next Steps

- Process map units and share good practice across the region
- Further analysis on the data
- Hoping to develop unit specific QI projects and implement changes to improve EBM use



Acknowledgements

- Dr E Pilling
- Yorkshire and the Humber Operational Delivery Network, in particular Charlotte Bradford and team for providing the initial data