



**Royal College of
Paediatrics and Child Health**

Leading the way in Children's Health

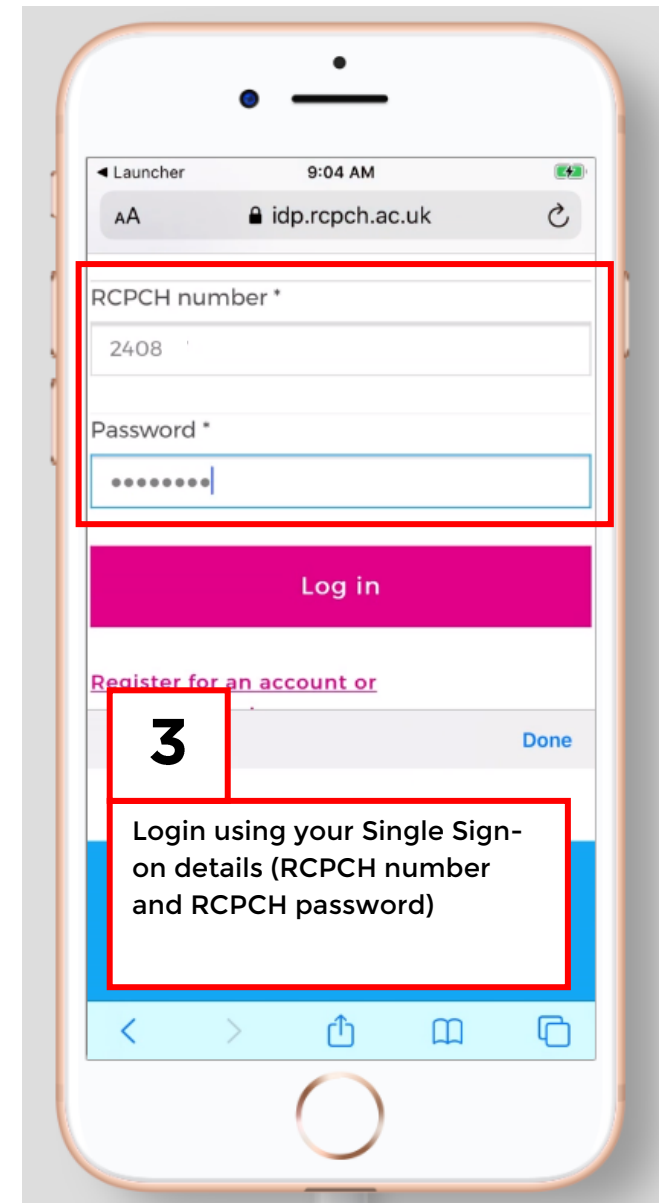
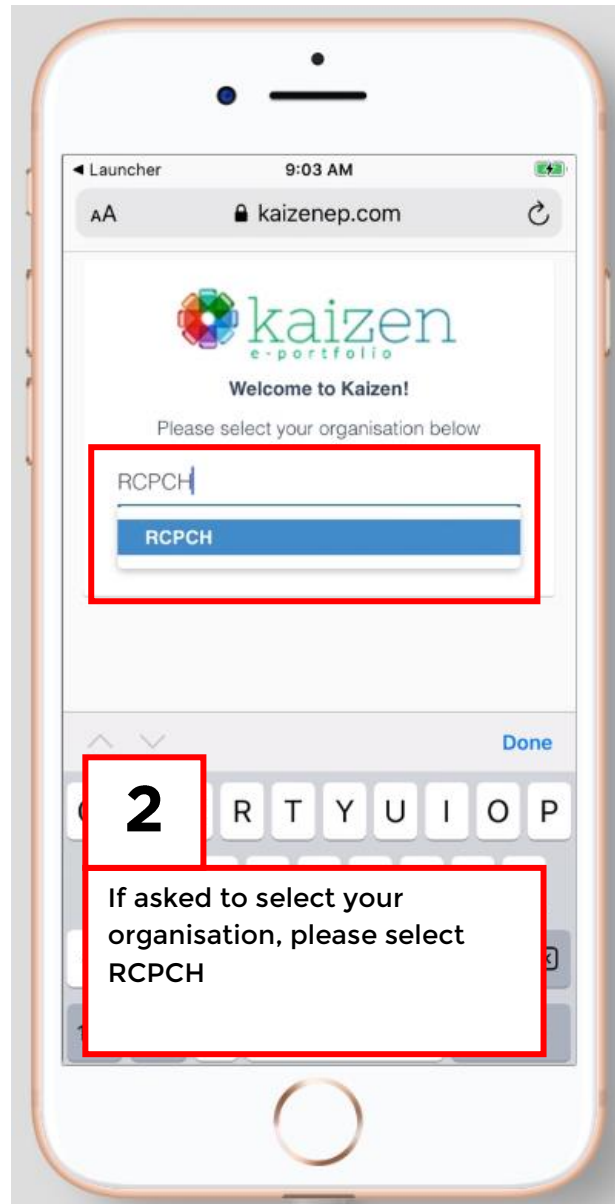
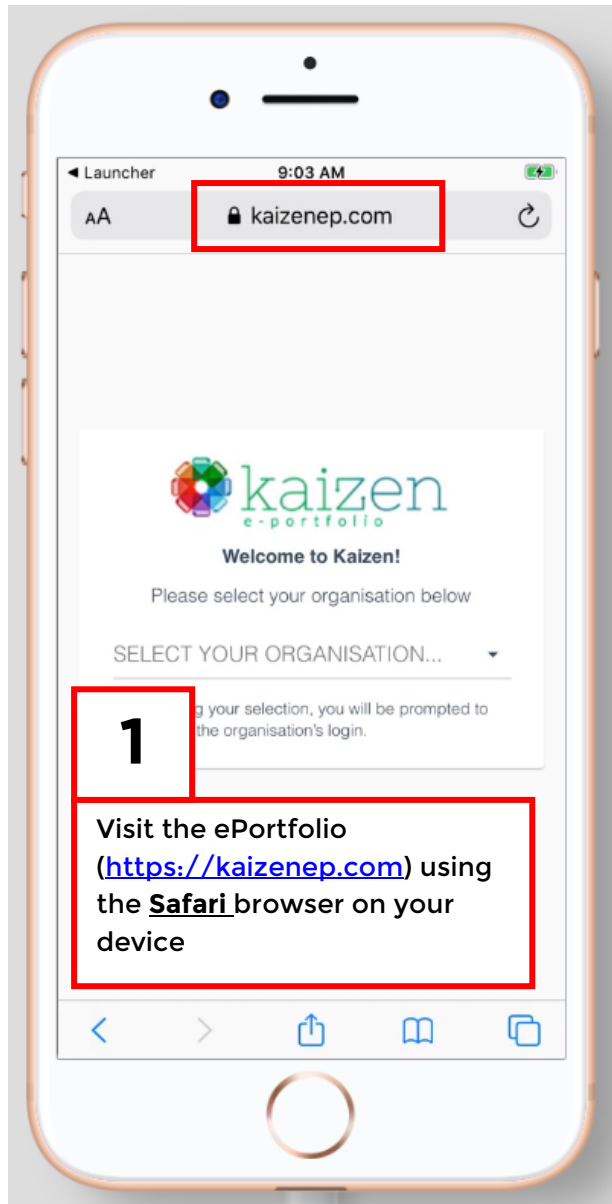
Adding the ePortfolio to your mobile device home screen

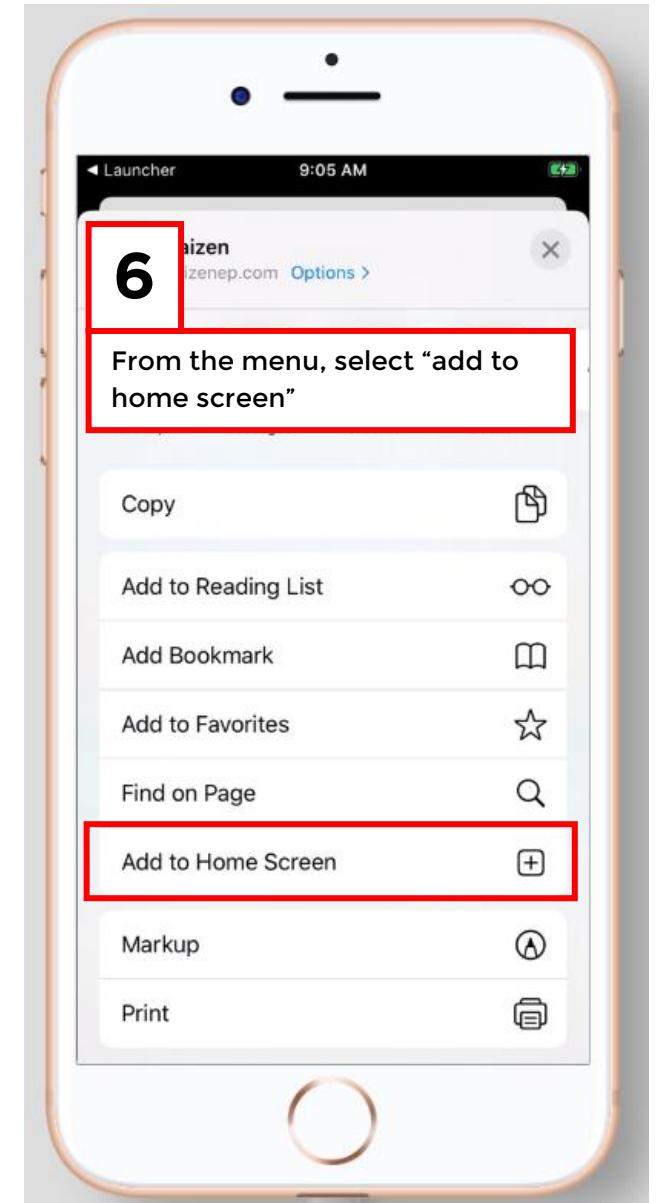
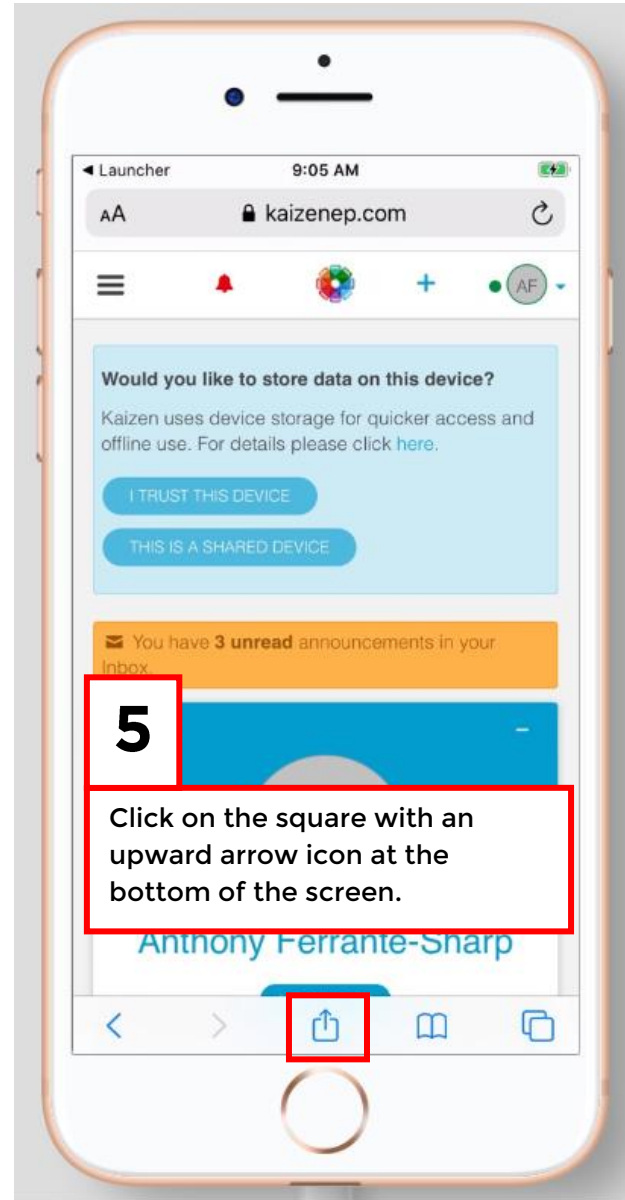
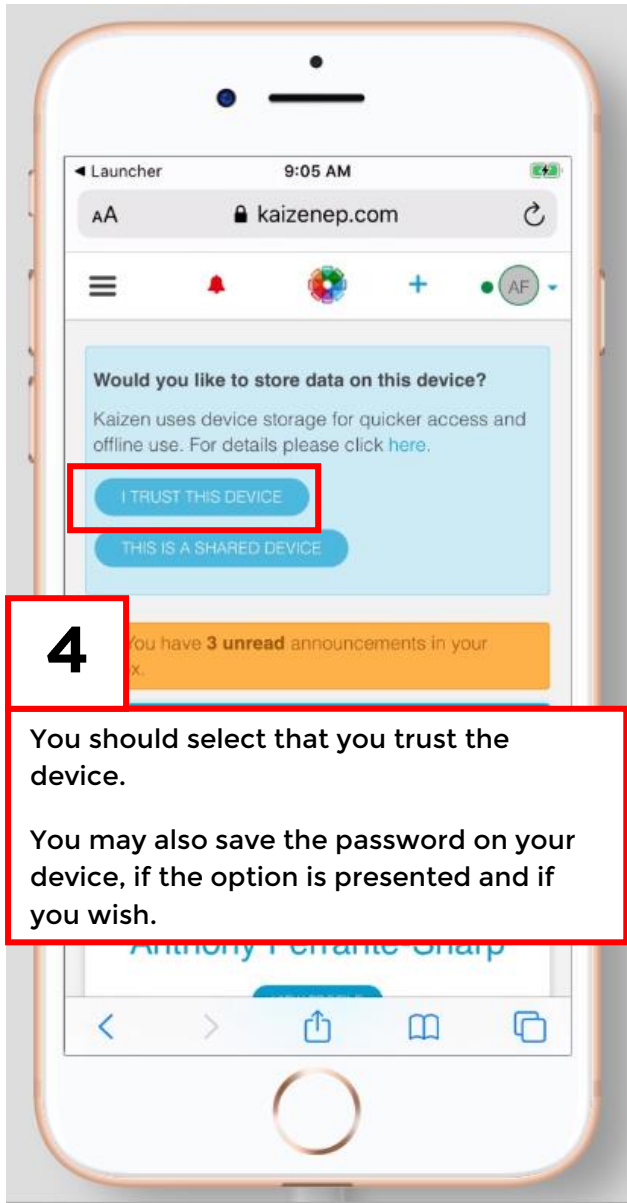
Updated November 2019

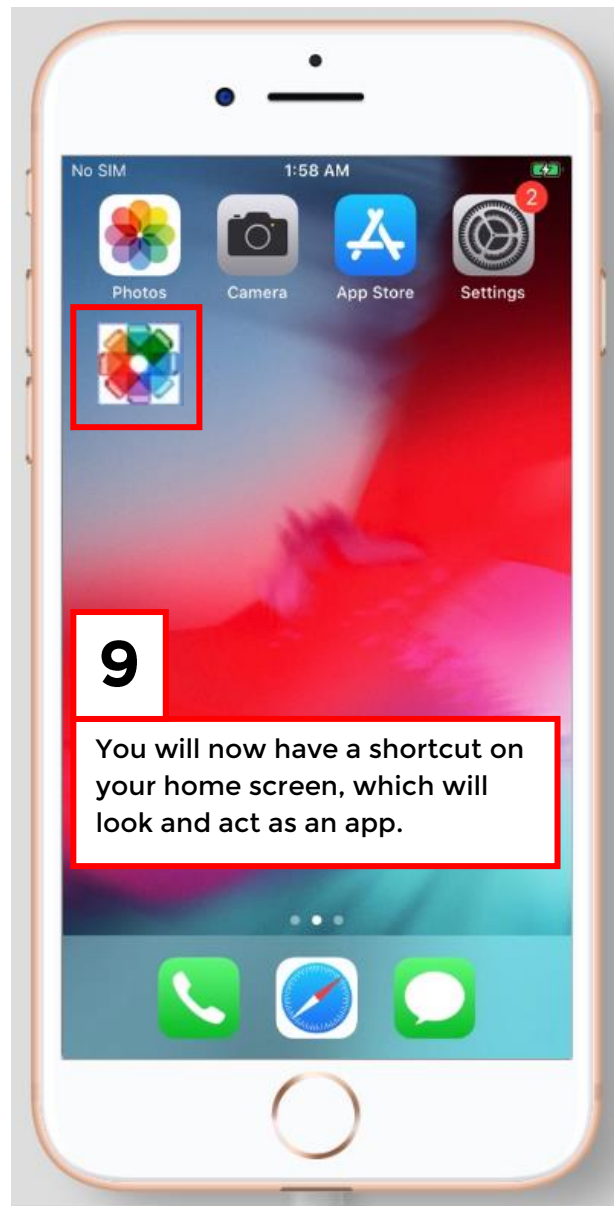
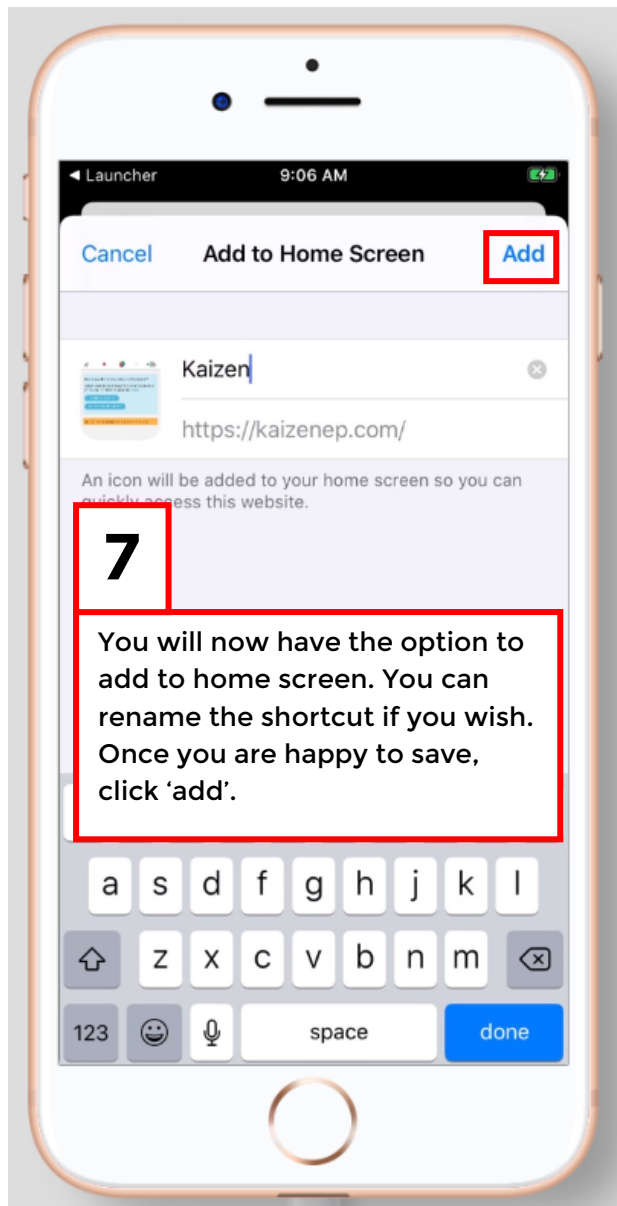
Contents

Item	Page
Adding the RCPCH eportfolio to the home screen on Apple devices	... 3
Enabling 'offline mode' on your mobile device	... 6
Adding the RCPCH eportfolio to the home screen on Android devices	... 9
Enabling 'offline mode' on your mobile device	... 12
Contact us	... 15

Adding the ePortfolio to your home screen on an Apple device

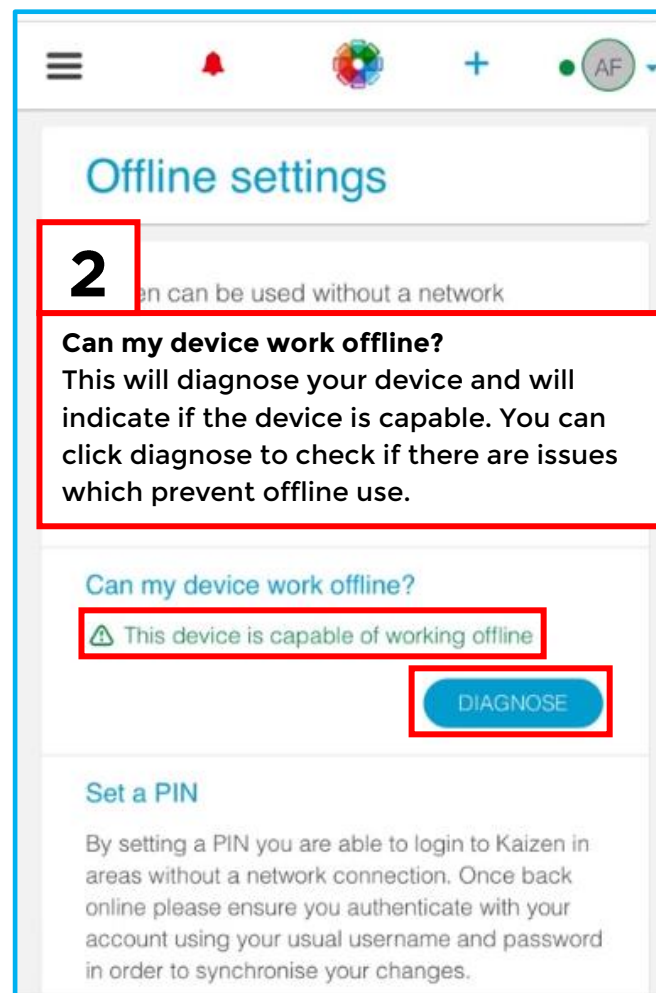
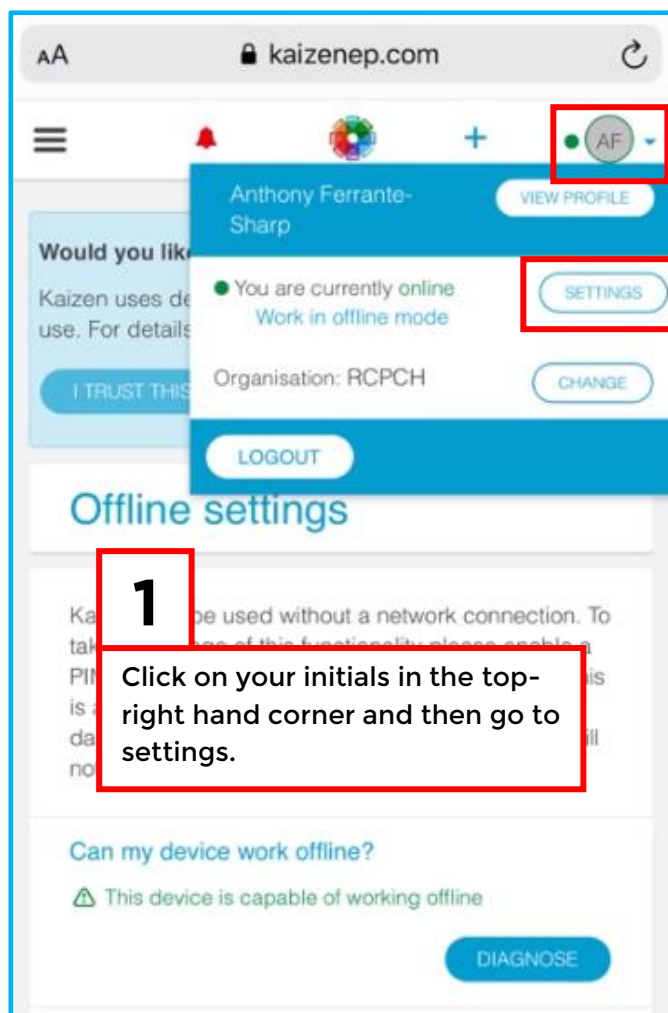


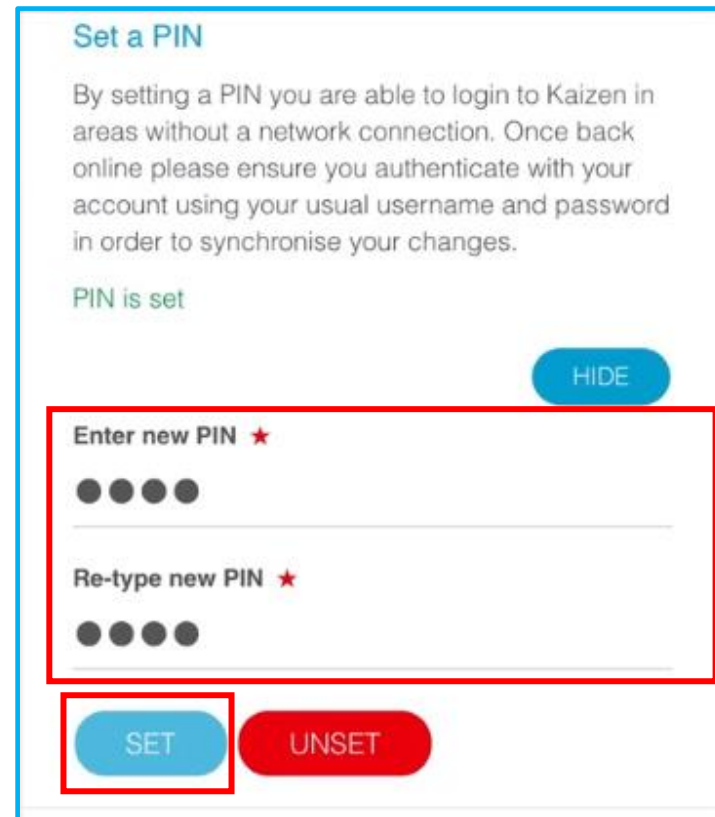
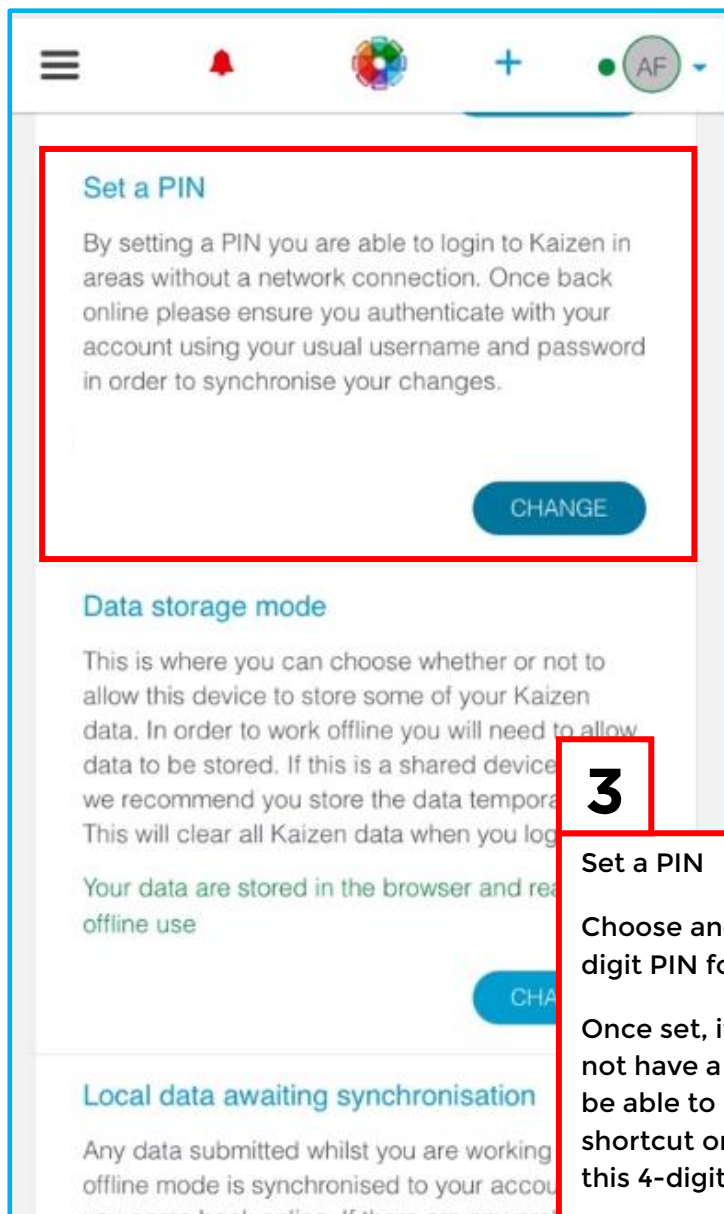




Enabling 'offline mode' on your mobile device

The RCPCH ePortfolio can be used in offline mode if a network connection (WiFi or mobile data) is not available. To enable this functionality, you will need to add a PIN and allow data to be stored on the device to be synced with your main account once a connection is available.





3

Set a PIN

Choose and set a memorable 4-digit PIN for the WebApp.

Once set, if your device does not have a connection, you will be able to login to the ePortfolio shortcut on your device using this 4-digit PIN.

Data storage mode

This is where you can choose whether or not to allow this device to store some of your Kaizen data. In order to work offline you will need to allow data to be stored. If this is a shared device then we recommend you store the data temporarily. This will clear all Kaizen data when you logout.

Your data are stored in the browser and ready for offline use

HIDE

Data storage mode ★

Data persistently stored in the browser

SET

4

Data storage mode

You will need to enable data storage mode, to allow data to be stored on your mobile phone when it is offline, to be synchronised once you are able to connect.

Local data awaiting synchronisation

Any data submitted whilst you are working in offline mode is synchronised to your account when you come back online. If there are any problems with this sync you can act upon them here.

There are no locally modified items waiting to be synchronised.

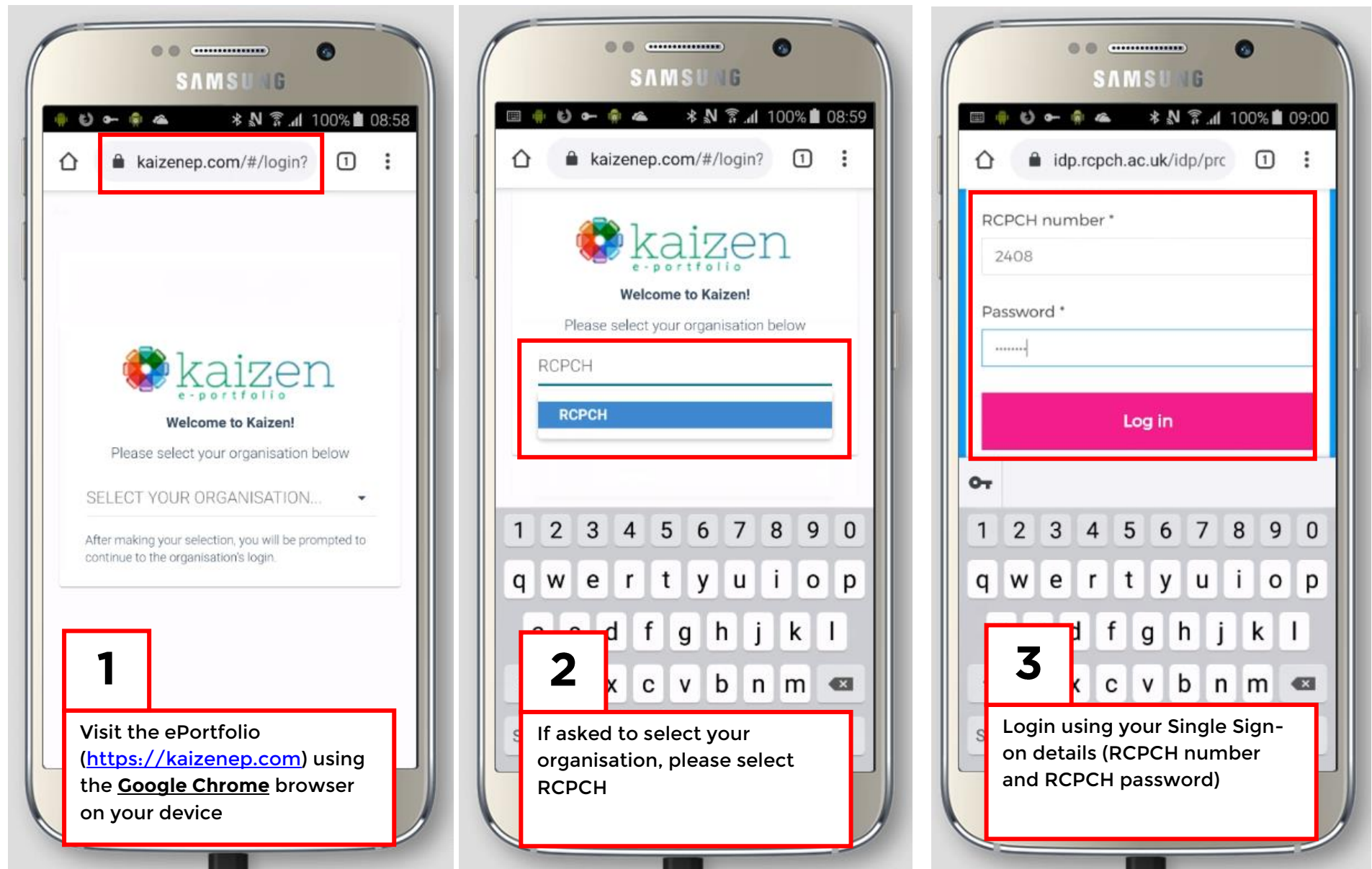
REVIEW

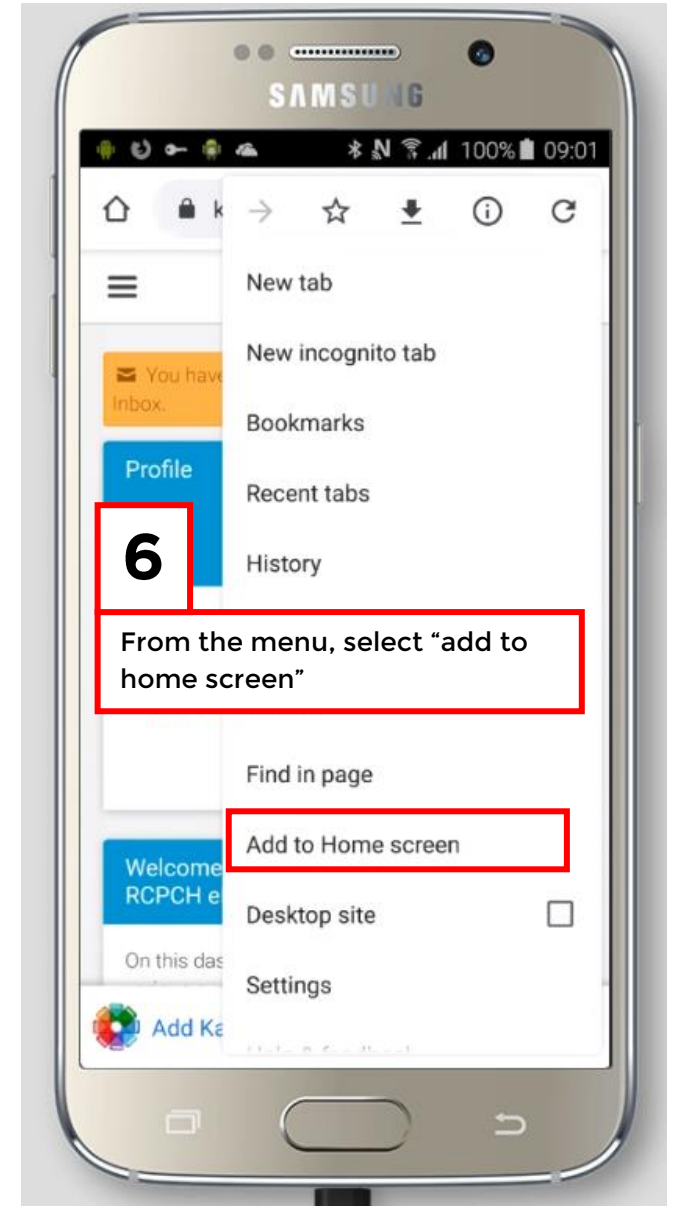
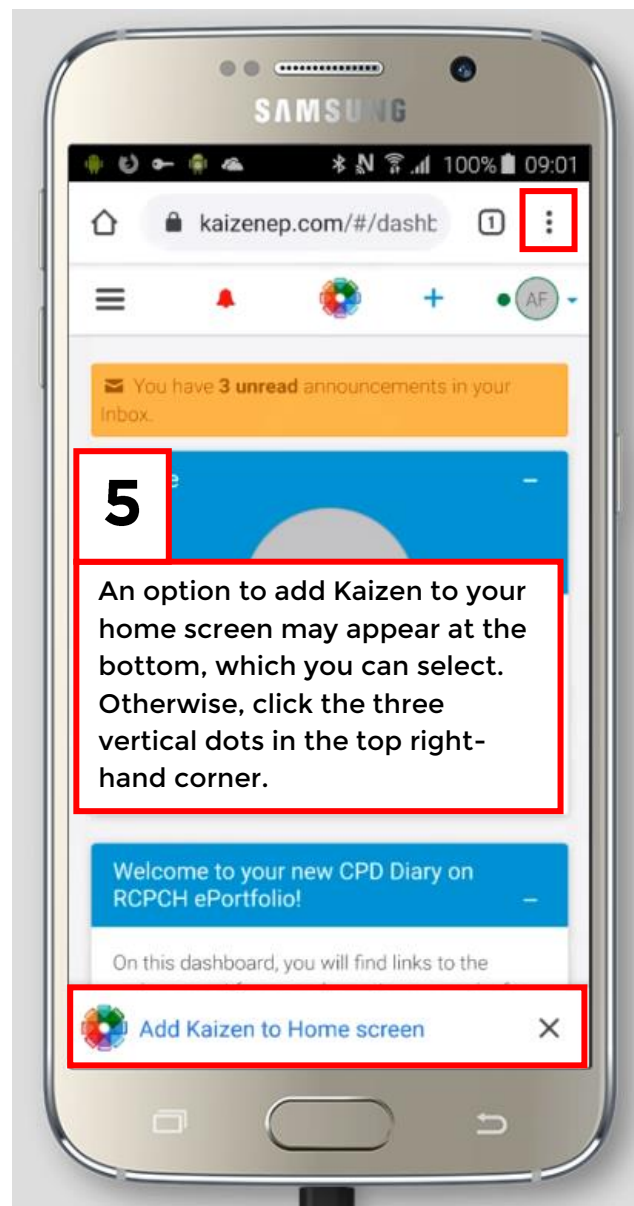
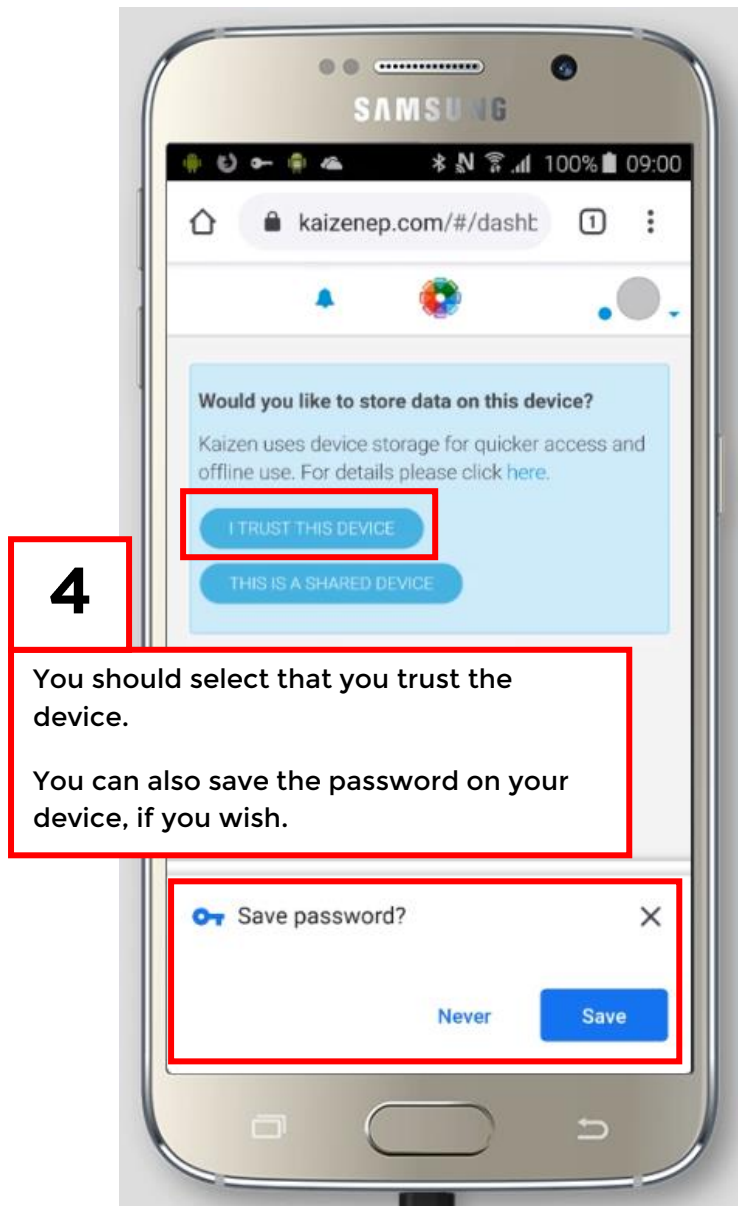
Show advanced ▼

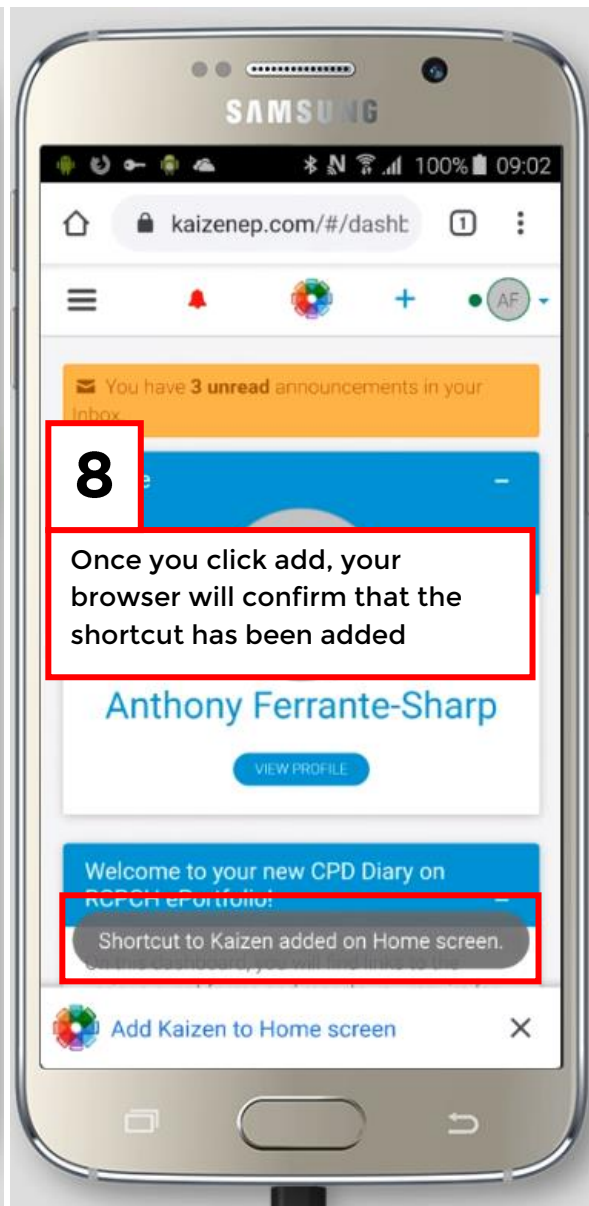
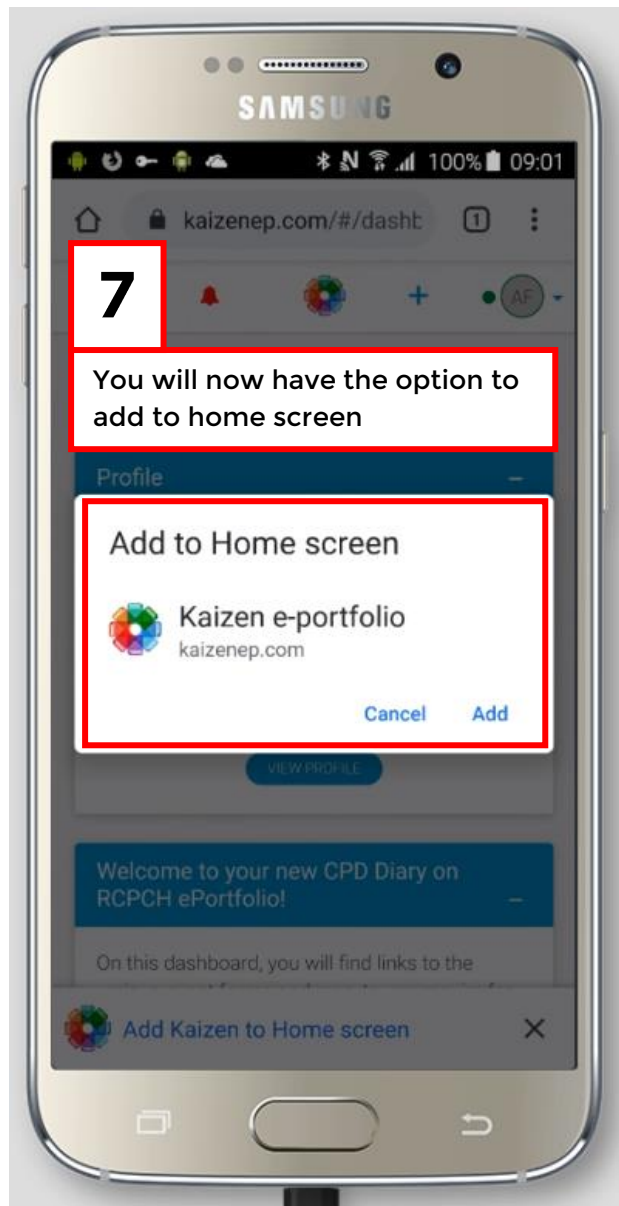
Local data awaiting synchronisation

Once you start using offline mode, you should regularly check that the offline data stored on your mobile device has synced with the main desktop version of the RCPCH ePortfolio.

Adding the ePortfolio to your home screen on an Android device

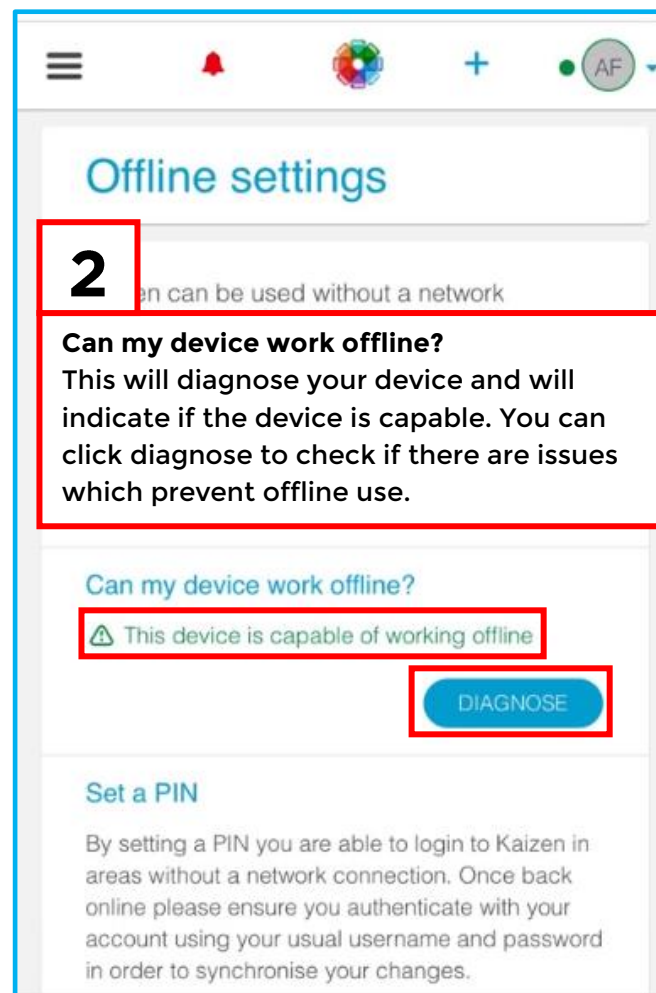
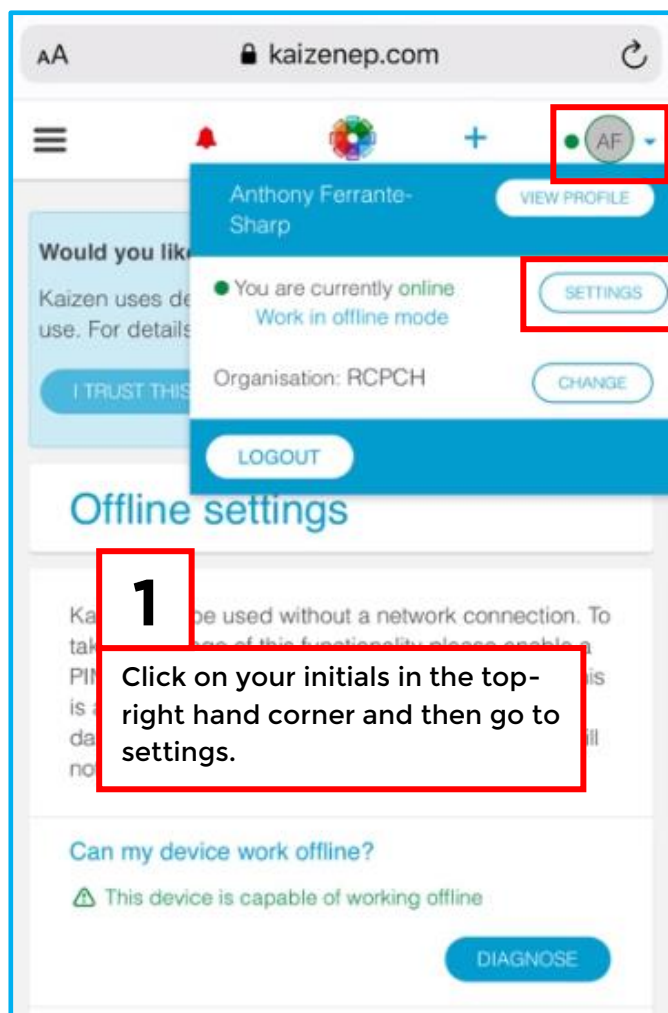


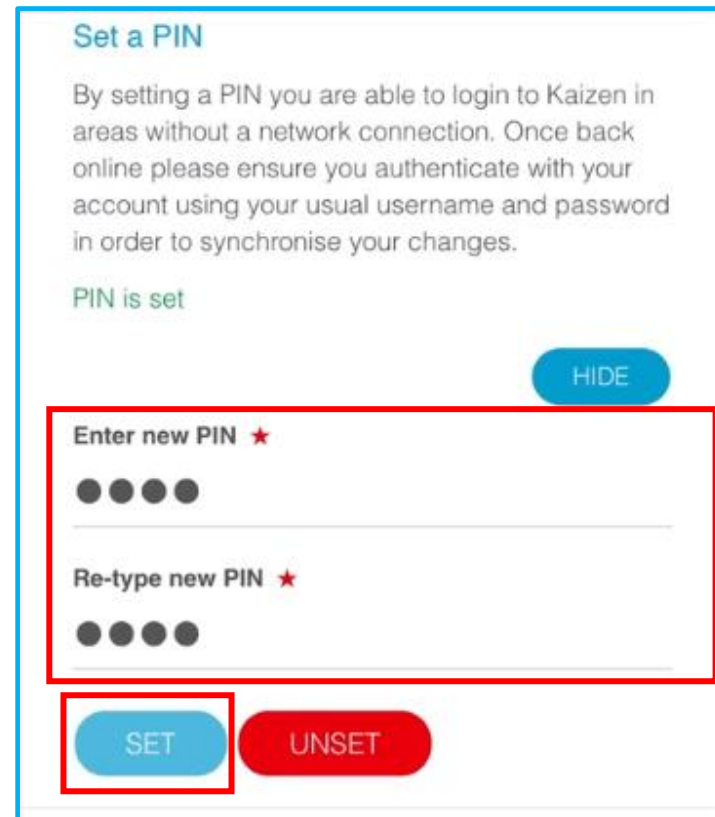
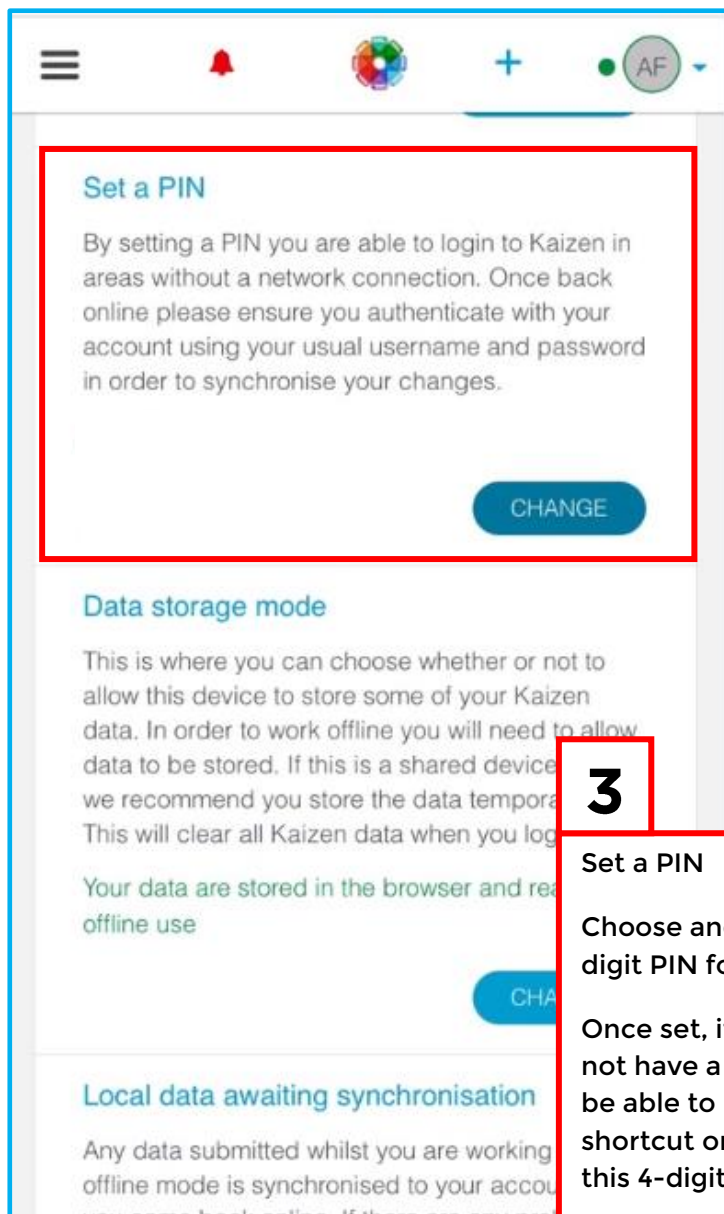




Enabling 'offline mode' on your mobile device

The RCPCH ePortfolio can be used in offline mode if a network connection (WiFi or mobile data) is not available. To enable this functionality, you will need to add a PIN and allow data to be stored on the device to be synced with your main account once a connection is available.





3

Set a PIN

Choose and set a memorable 4-digit PIN for the WebApp.

Once set, if your device does not have a connection, you will be able to login to the ePortfolio shortcut on your device using this 4-digit PIN.

Data storage mode

This is where you can choose whether or not to allow this device to store some of your Kaizen data. In order to work offline you will need to allow data to be stored. If this is a shared device then we recommend you store the data temporarily. This will clear all Kaizen data when you logout.

Your data are stored in the browser and ready for offline use

HIDE

Data storage mode ★

Data persistently stored in the browser

SET

4

Data storage mode

You will need to enable data storage mode, to allow data to be stored on your mobile phone when it is offline, to be synchronised once you are able to connect.

Local data awaiting synchronisation

Any data submitted whilst you are working in offline mode is synchronised to your account when you come back online. If there are any problems with this sync you can act upon them here.

There are no locally modified items waiting to be synchronised.

REVIEW

Show advanced ▼

Local data awaiting synchronisation

Once you start using offline mode, you should regularly check that the offline data stored on your mobile device has synced with the main desktop version of the RCPCH ePortfolio.

Feedback

Tell us what you think: cpd@rcpch.ac.uk

More Information

www.rcpch.ac.uk/cpd

Contact Us

Email us: cpd@rcpch.ac.uk



**Royal College of
Paediatrics and Child Health**

Leading the way in Children's Health