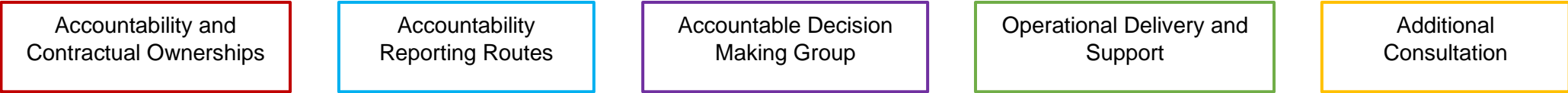


## Epilpesy12 Project Management and Governance Structure

KEY:



Overall Clinical accountability for the audit is provided by an elected **Vice President of the Royal College of Paediatrics and Child Health (RCPCH)**

Overall organisational and contractual accountability is provided by the **Director of Research and Policy (RCPCH)**

Overall Clinical leadership for the audit is provided by the **Epilepsy12 Audit Clinical Lead** who will be appointed by the RCPCH following a formal recruitment process.

