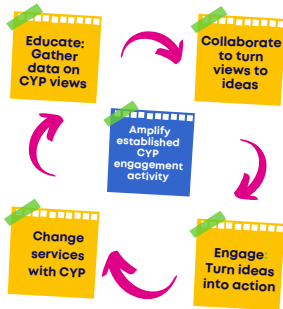


RCPCH Guidance: Children and Young People's engagement in your Integrated Care System

Purpose: Your Integrated Care System (ICS) has a statutory requirement to include engagement from children and young people (CYP). The RCPCH shares ideas, tips and links to resources to help you and your ICS to think about how to do this well.

Model



Method

CYP engagement involves:

- **Educating** ourselves on CYP voices and views
- **Collaborating** with the ICS to turn this voice into ideas,
- **Engaging with CYP** to turn ideas into action
- ...and measuring **change**.

Essential steps:

- Find the voices using the resources and engagement practices that are *already* available in your community
- **Agree** with your ICS how you will listen to and act on the experiences of CYP.

Desired outcome

- CYP voice clearly articulated in your system wide plans for the ICS and engagement
- CYP are embedded in supporting the ICS to develop plans, priorities, and improve services
- ICS is now able to listen to and act on the experiences and aspirations of CYP & support them to improve their own health and wellbeing.

Key Messages:

- CYP engagement is essential in ICS design.
- Amplify CYP voice/views already shared in your community.
- Embed CYP voice system-wide in co-producing service improvement.

For full information visit:
www.rcpch.ac.uk/youth-voice-ICS

