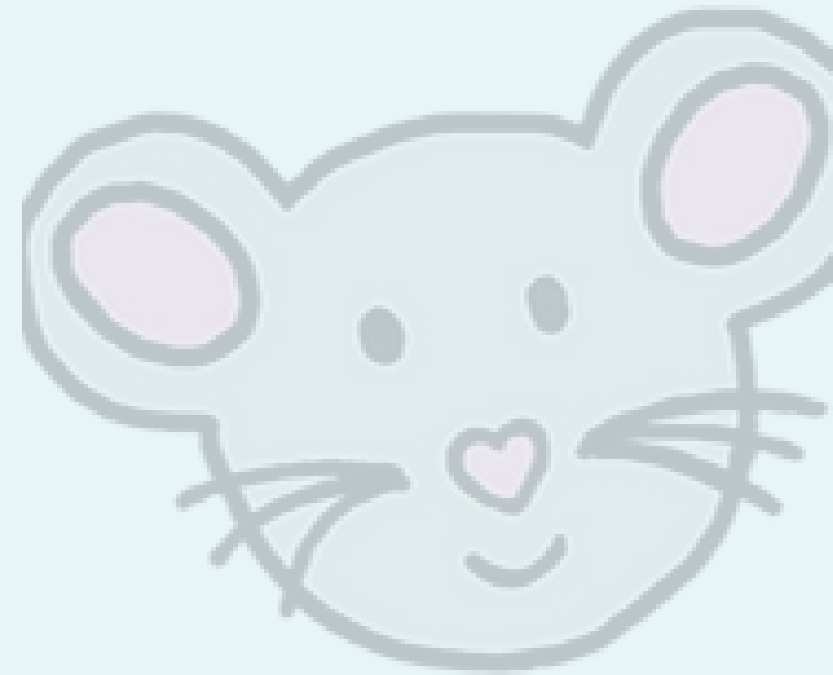


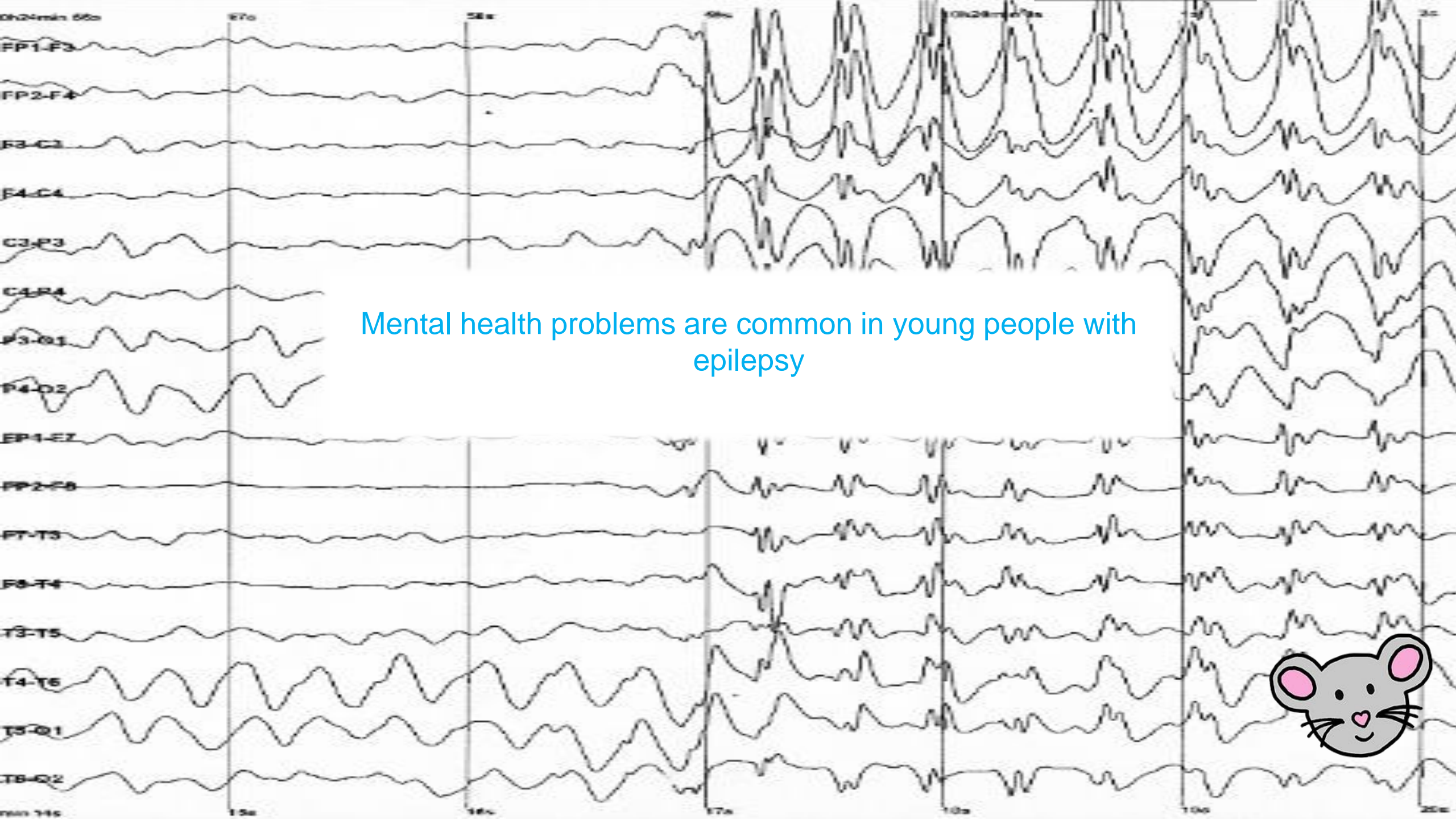


# M.I.C.E — Mental Health Intervention for Children with Epilepsy

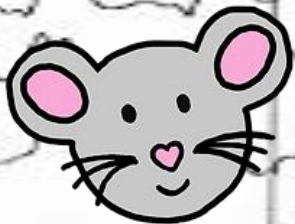
*Isobel Heyman*

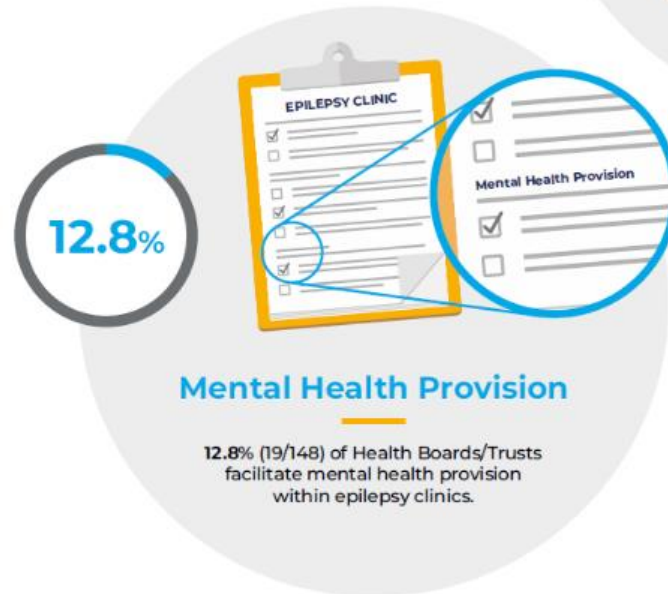
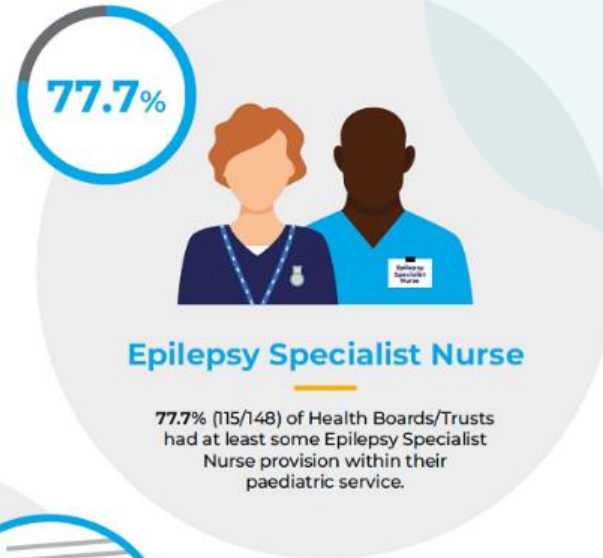
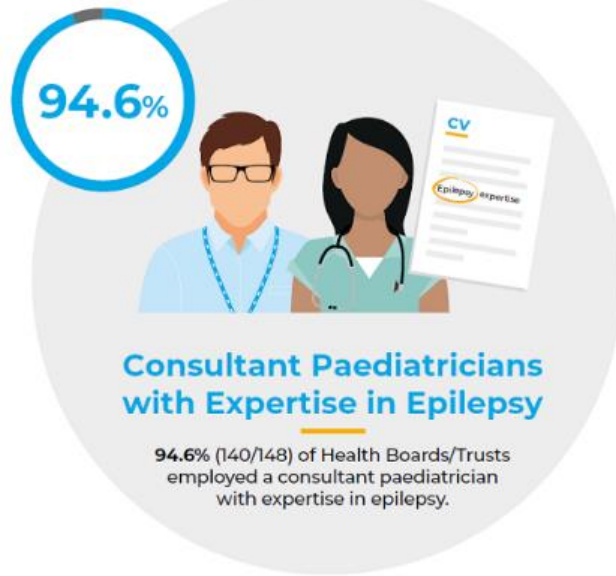
*Sophie Bennett*



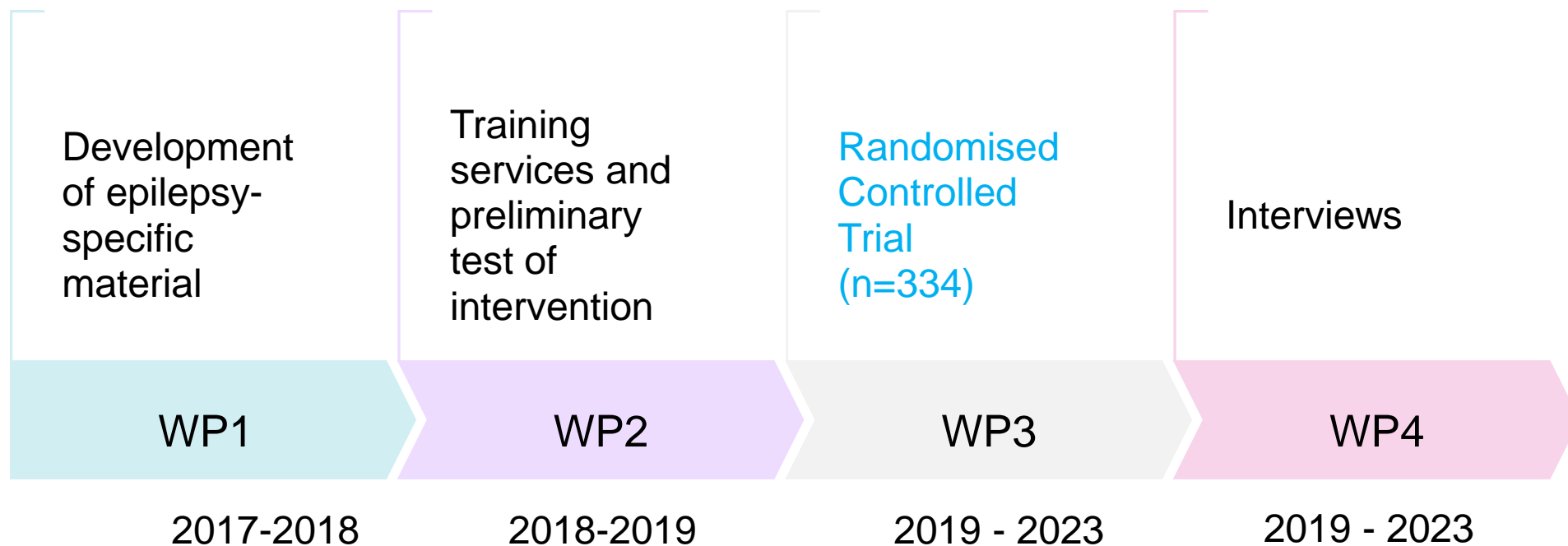


Mental health problems are common in young people with epilepsy

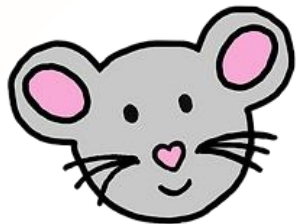
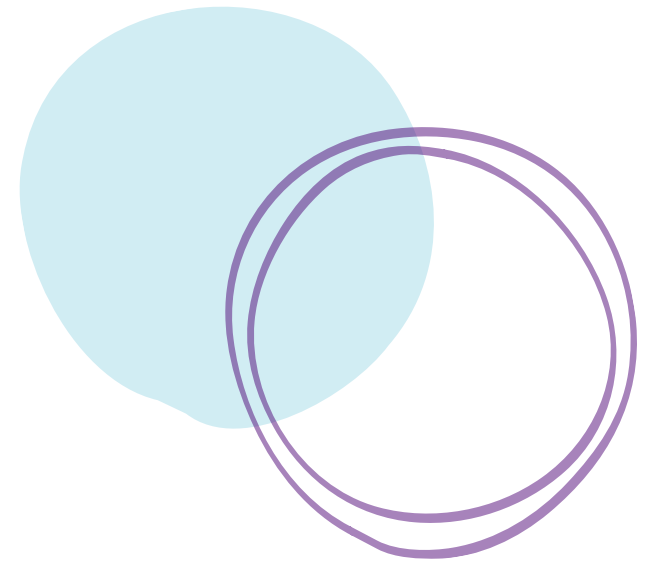
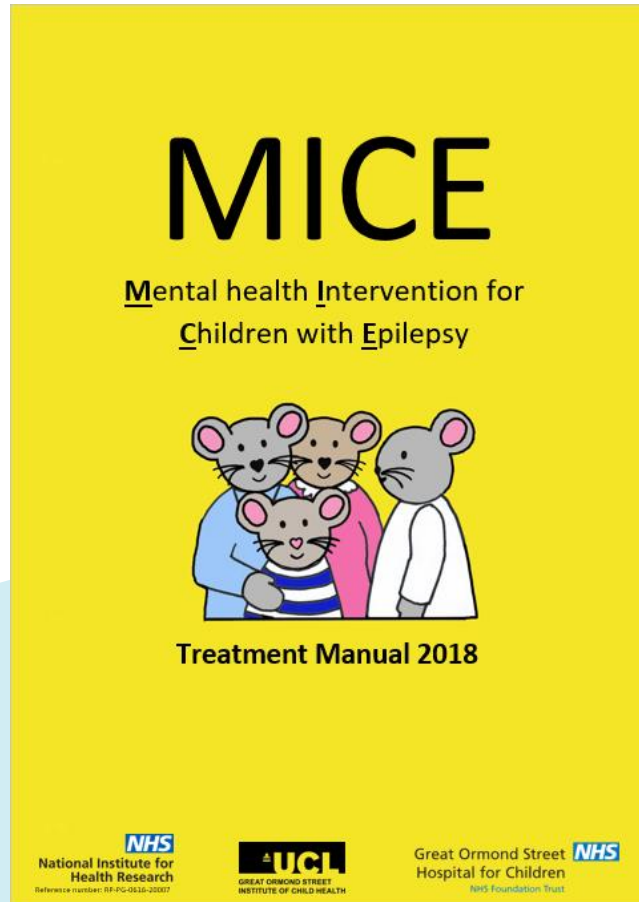




# MICE Programme

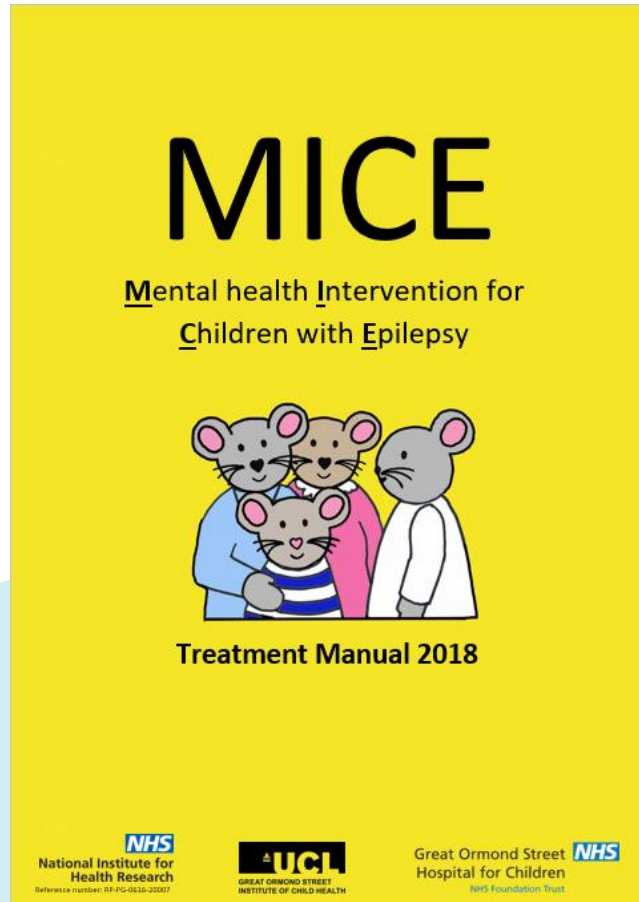


# Intervention

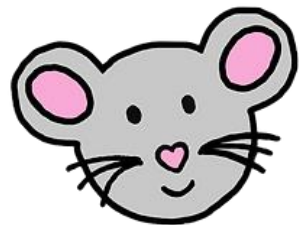
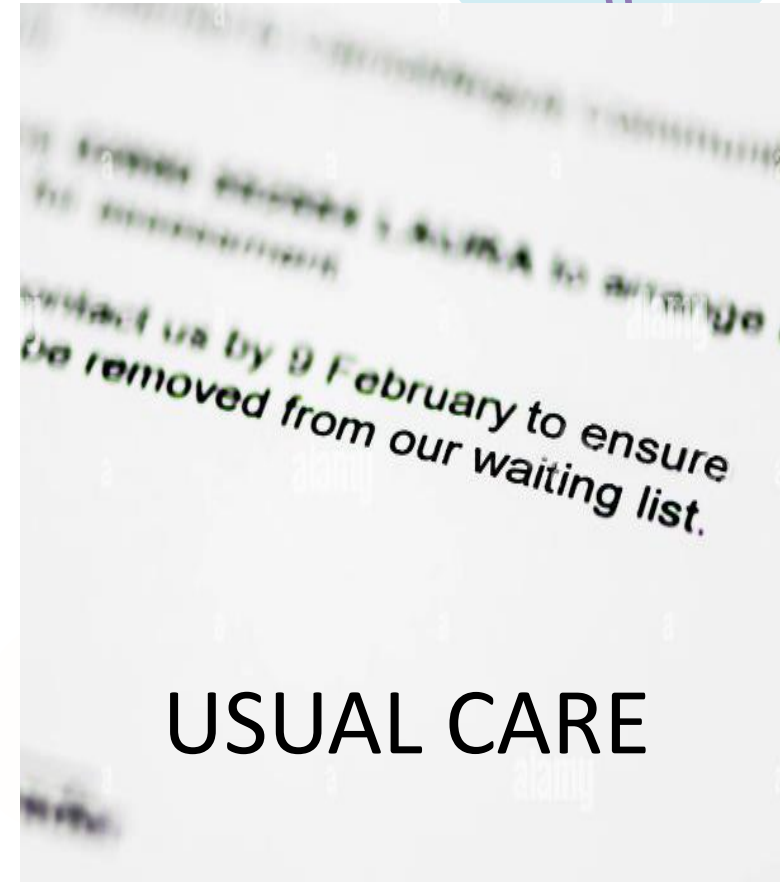




# Intervention



VS



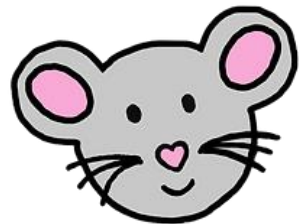
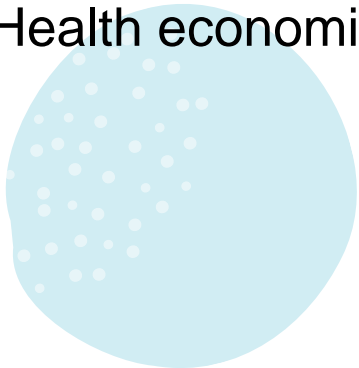
# The details...

## Participants

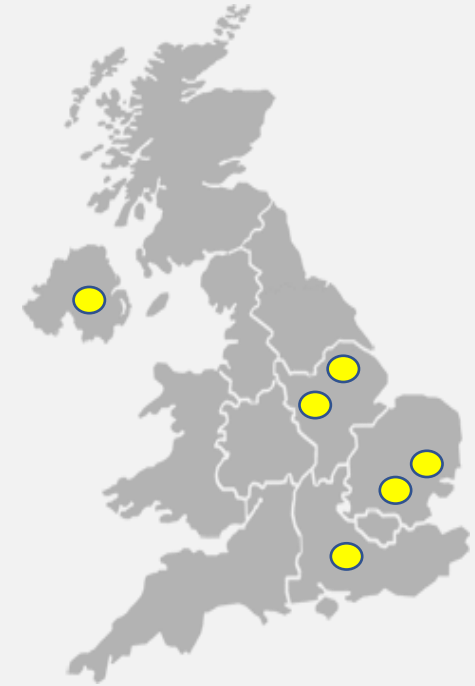
- 334 3-18 year olds, including those with Intellectual Disability and Autism
- Attending Epilepsy Clinics
- Mental Health Disorder (anxiety, depression, conduct) according to DAWBA

## Outcomes

- Primary outcome: Strengths and Difficulties Questionnaire
- Secondary outcomes: Quality of Life, Mental Health of child and parent
- Safety data
- Acceptability – Experience of Service Questionnaire
- Health economic



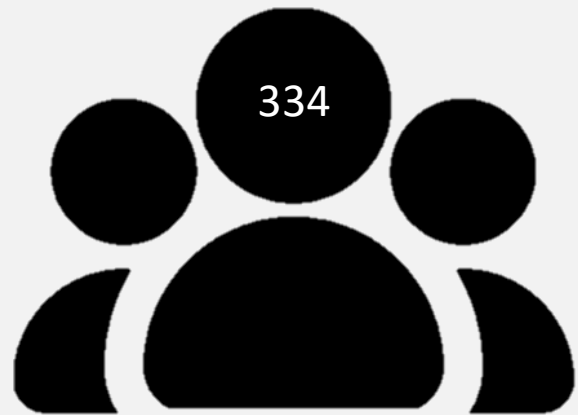
# All across the country!





# Participants

Randomised between 28 August 2019 and 21 February 2022



Around 60% below the age of 11 years

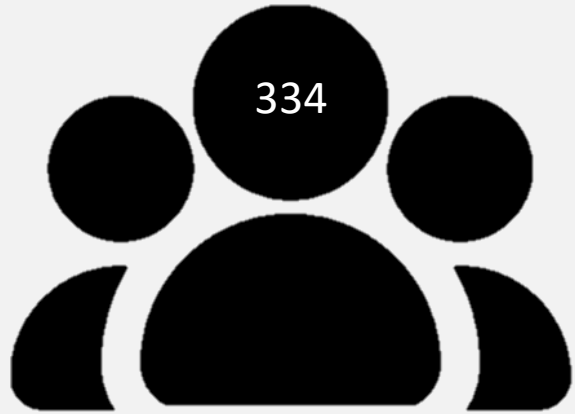


Around 50% female



# Participants

Randomised between 28 August 2019 and 21 February 2022



Around 25% with Autism Spectrum Disorder (ASD) diagnoses



Around 40% with intellectual disability diagnoses

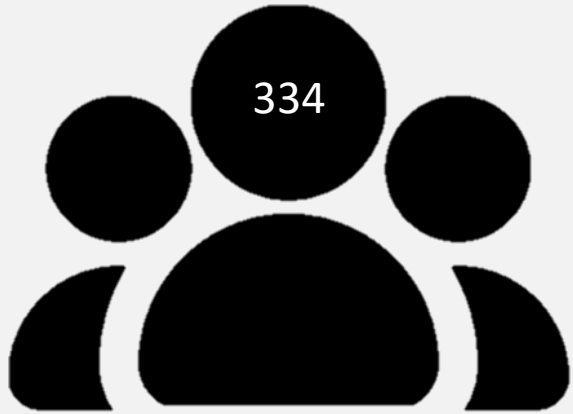


Around 65% reported having a seizure in the past three months



# Participants

Randomised between 28 August 2019 and 21 February 2022



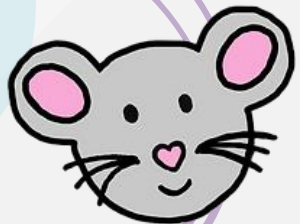
Around 55% reported  
“Disruptive behaviour”



Around 40% reported  
“Anxiety”



Around 5% reported  
“Depression”



# MICE Intervention: therapy sessions

- Of the 166 participants randomised to the MICE arm, 164 had at least one therapy session.
- Number of therapy sessions ranged between one to 22 (Median=16 sessions).
- 21 therapists provided therapy sessions as a main therapist on the trial.

