

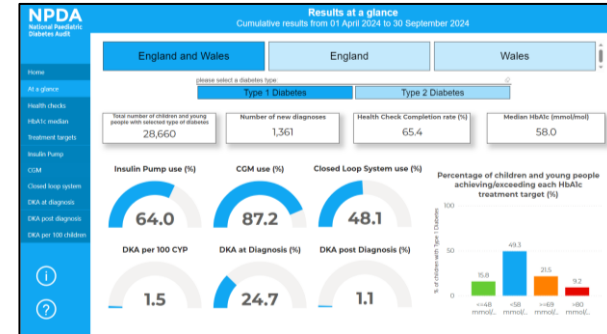
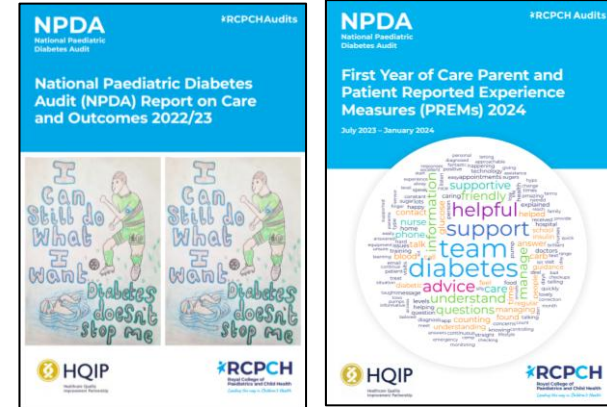
Progress update and next steps for the NPDA

Amani Krayem, NPDA Manager, RCPCH



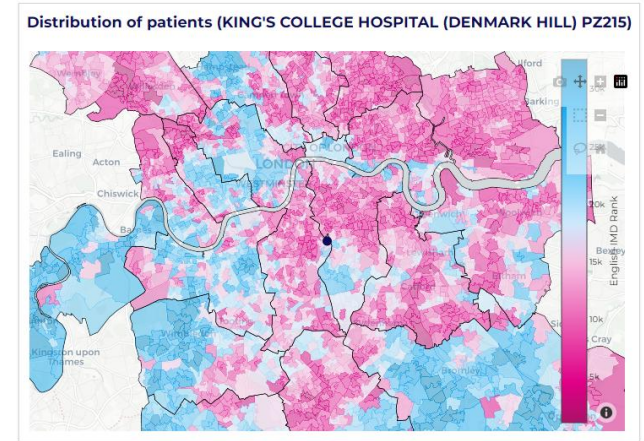
What we've been up to since last year

- Hosted a **webinar** on NPDA reporting.
- Published the **2022/23 Report on Care and Outcomes**, extended analysis, data files, and NPDA Results Online.
- Shared data for the NHS England **5-Year HCL Implementation Strategy and GIRFT**
- Launched the **Frequent Reporting Dashboard**, alongside quarterly data files.
- Onboarded **Jersey** into the audit.
- Presented at **ISPAD 2024** in Lisbon.
- Published the **2024 First Year of Care PREM** report.
- Submitted the **2023/24 Report on Care and Outcomes** and prepared unit-level summaries.
- Submitted the **2023/24 Type 2 Diabetes Spotlight Audit**.
- Secured an **extension into 2027**.
- Facilitated a number of data access requests and extended outputs.



What's coming next

- **Retender** for 2027 onwards
- Publish the **2023/24 Report on Care and Outcomes**, and the **2023/24 Type 2 Spotlight Audit**.
- Launch **new NPDA data capture system**.
- Commission **DigiBete** to produce films based on the findings of the AYPH report and the Poverty Proofing report.
- Commission Children's North East to offer **Poverty Proofing training** to all PDUs in England, Wales, and Jersey.
- **PPI**, to gather CYP and parent/carer perspectives into the use of their confidential data for the NPDA.
- Updating the NPDA **Dataset** and rebuilding **NPDA Results Online**.
- Reporting for 2024/25, and data collection for 2025/26.



Extension into 2027

- **Workforce spotlight audit**
 - Numbers of patients with additional care needs
 - Disparities in staffing
 - Psychology and transition standards
- **PREM**
 - Topic to be decided

“The panel had no current concerns with the delivery of the NPDA and expressed their thanks to the team for the excellent audit, especially the work undertaken around the publication of the quarterly reporting and the response to NHSE’s Hybrid Closed Loop requirements.”

Thank you!

- Everyone involved with submitting data into the NPDA and using the results to improve care
- NPDA Project Team
- RCPCH Audit's Team
- NPDA Project Board
- NPDA Dataset and Methodology Group
- CYP Diabetes Network
- HQIP
- Families with diabetes

