

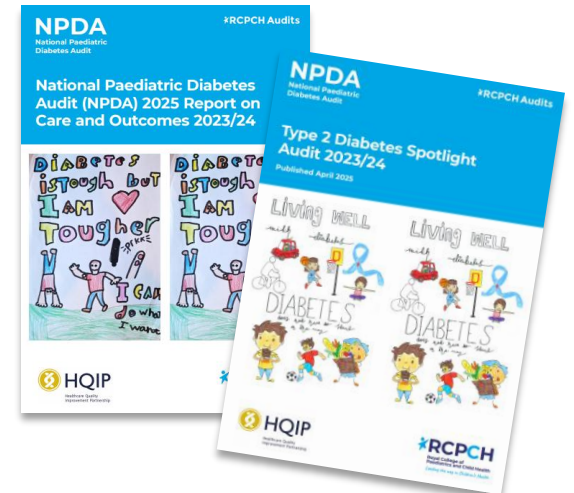
# Progress update and next steps for the NPDA

---

Amani Krayem, NPDA Manager, RCPC

# What we've been up to since last year

- Launched the new NPDA **Data Capture Platform**
- Published the **2023/24 Report on Care and Outcomes** and **2023/24 Type 2 Diabetes Spotlight Audit** Report.
- Published **2024 First Year of Care PREM** ICB-level reports and extended analysis.
- Submitted the **2024/25 Report on Care and Outcomes.**
- Closed data collection for the **2024/25 Workforce Spotlight Audit.**
- Commissioned Children's North East to deliver **Poverty Proofing** training to all PDUs.
- Commissioned **RCPCH&Us** to deliver the CYP Communication Project.
- Rebuilt the **NPDA Extended Analysis.**
- Facilitated a number of data access requests and extended outputs.



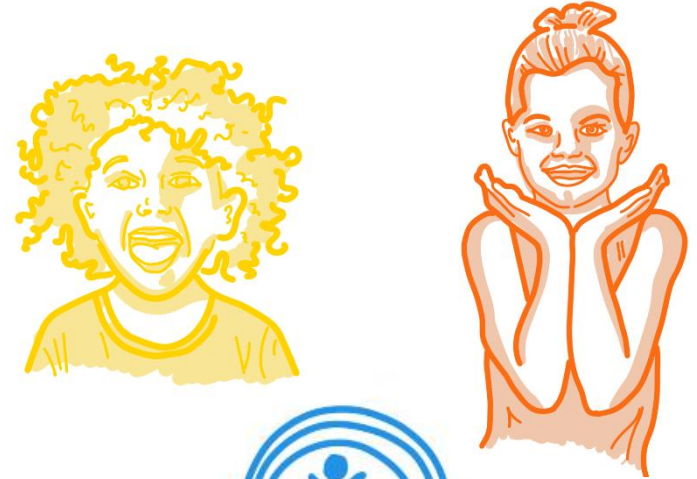
Because growing up can be hard



# Diabetes at School PREM

---

- Survey open for 6 months from **2<sup>nd</sup> March 2026**.
- Open to CYP with diabetes who are in education and their parents/carers.
- Unit-level results will be available for units with at least 10 responses.



# Thank you!

---

- Everyone involved with submitting data into the NPDA and using the results to improve care
- NPDA Project Team
- RCPCH Audits Team
- NPDA Project Board
- NPDA Dataset and Methodology Group
- CYP Diabetes Network
- HQIP
- Families with diabetes

